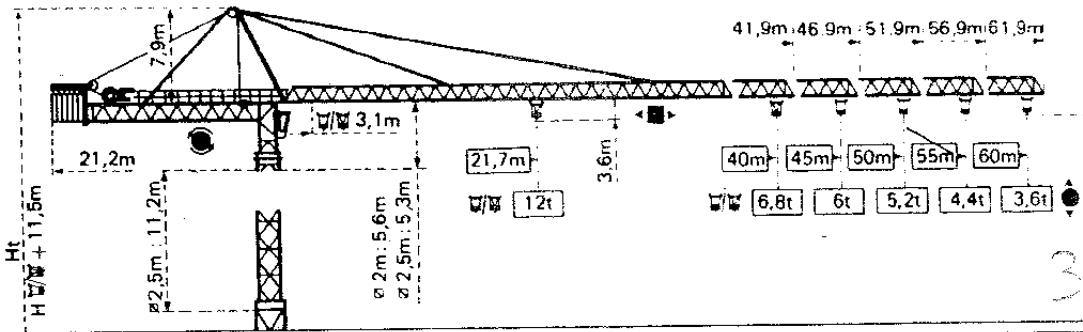


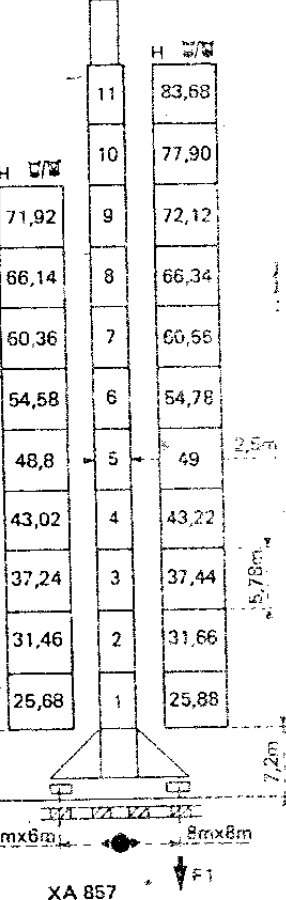
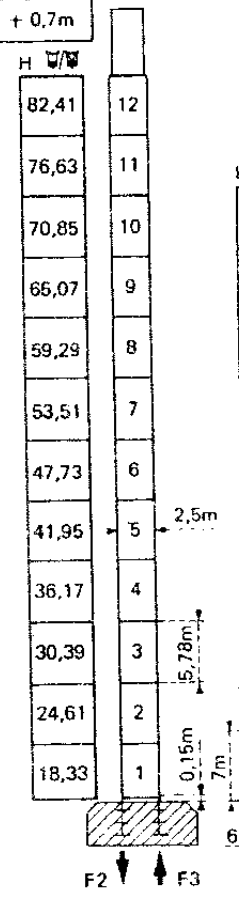
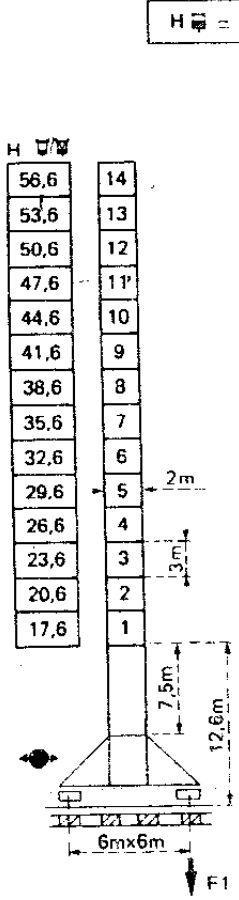
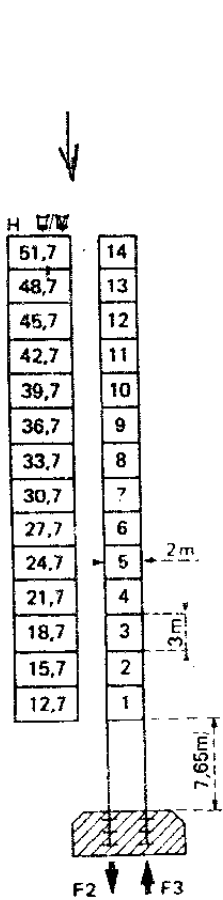
POTAIN TOPKIT H3/36 B

Cotes Abmessungen Dimensions Dimensiones



Mature Mast Mast Mástil
 □ 2m x 2m
PA 654

Mature Mast Mast Mástil
 □ 2.5m x 2.5m
PA 856 **XA 857** **YA 858**



$H_{\square} = H \frac{W}{W} + 0,7m$

F = Réactions Eckdrücke Reactions Reacciones

F2	● 135 t	■ 140 t
F3	● 89 t	■ 94 t
	77 t	

F1	● 85 t	■ 95 t
	93 t	

F2	● 165 t	■ 213 t
F3	● 99 t	■ 157 t
	97,9 t	

XA 857

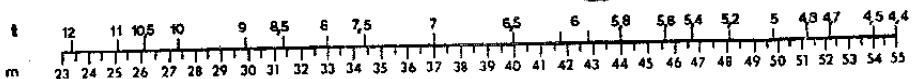
F1	● 113 t	■ 116 t
	102,9 t	

YA 858

F1	● 103 t	■ 121 t
	114,9 t	

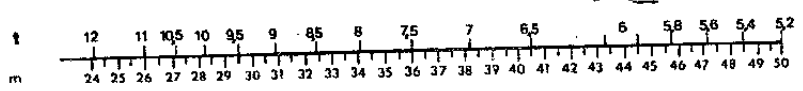
Flèche Jib 55m

W = U - 0,2 t
SM/DM



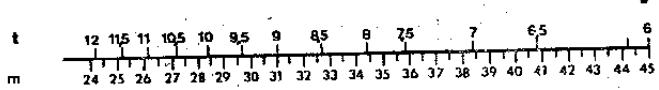
Flèche Jib 50m

W = U - 0,2 t
SM/DM



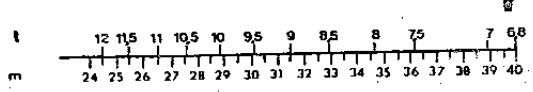
Flèche Jib 45m

W = U - 0,2 t
SM/DM



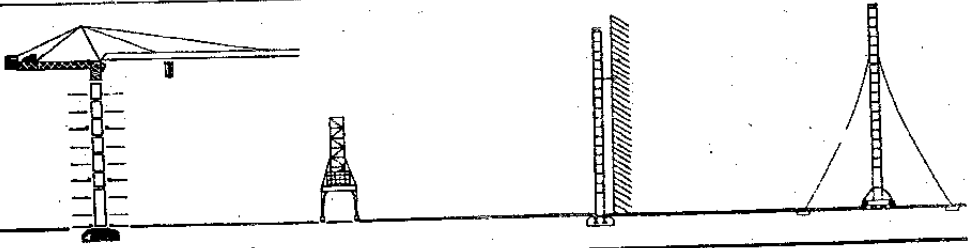
Flèche Jib 40m

W = U - 0,2 t
SM/DM



hauteur sous crochet théorique: obtenue flèche horizontale garde
 de course de 0,70 m entre moufle et chariot
 hook height theoretical: obtained horizontal jib limit switch protection
 distance of 0,70 m between pulley and trolley

implantations spéciales:
 nous consulter
 special mounting possibilities:
 consult us



Potain

B.P. 173 - F 69130 ECULLY - Route de Charbonnières
 Tél. (78) 33.81.81 + - Télex 330179
 AGENCES:
 Paris - Lyon - Marseille - Rennes - Strasbourg - Toulouse - Nancy
 EXPORT : 89, Avenue du Président Roosevelt

