

CITY CRANE MC 85

LKK 1

POTAIN

TÜV Cert
POTAIN ISO 9001 POTAIN
LEOYD'S RQA

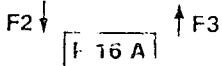
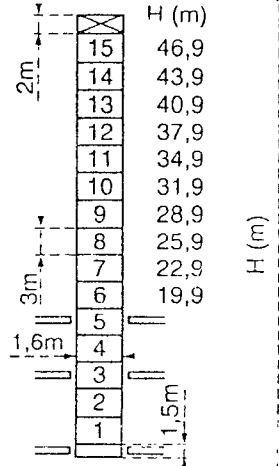
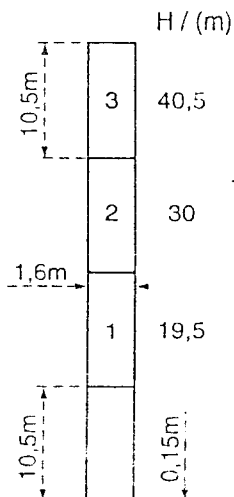
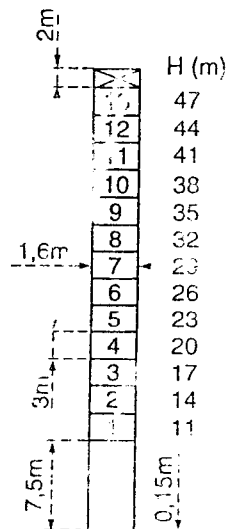
ats - Masto - Mastš - Mástil - Torre



□ 1,6m

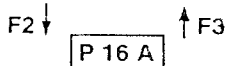
Z

Flèche - Ausleger - Jib
Flecha - Braccio
30m → 55m



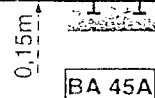
F2	● 95t	■ 138t
F3	● 65t	■ 111t

⊗	37t
---	-----

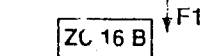
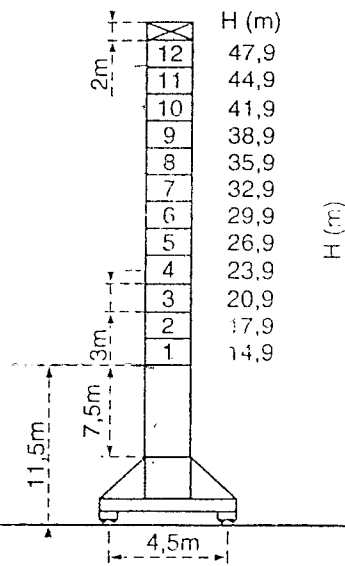
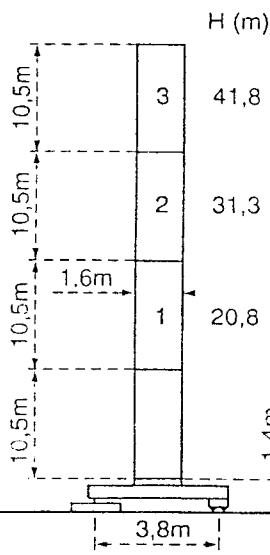
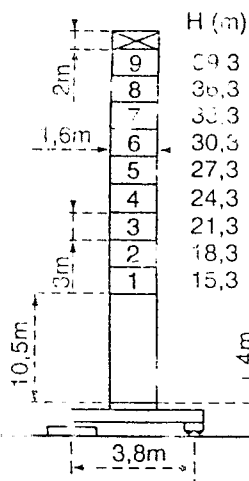


F2	● 79t	■ 95t
F3	● 54t	■ 73t

⊗	31t
---	-----

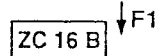


Voir ci-contre
Siehe nebenstehend
See opposite
Ver pagina opuesta
Vedi pagina accanto



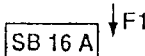
F1	● 60t	■ 70t
----	-------	-------

⊗	39t
---	-----



F1	● 60t	■ 72t
----	-------	-------

⊗	35t
---	-----



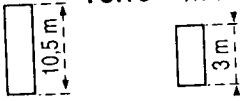
F1	● 68t	■ 88t
----	-------	-------

⊗	44t
---	-----

F = Réactions - Eckdrücke - Reactions - Reacciones - Reazioni

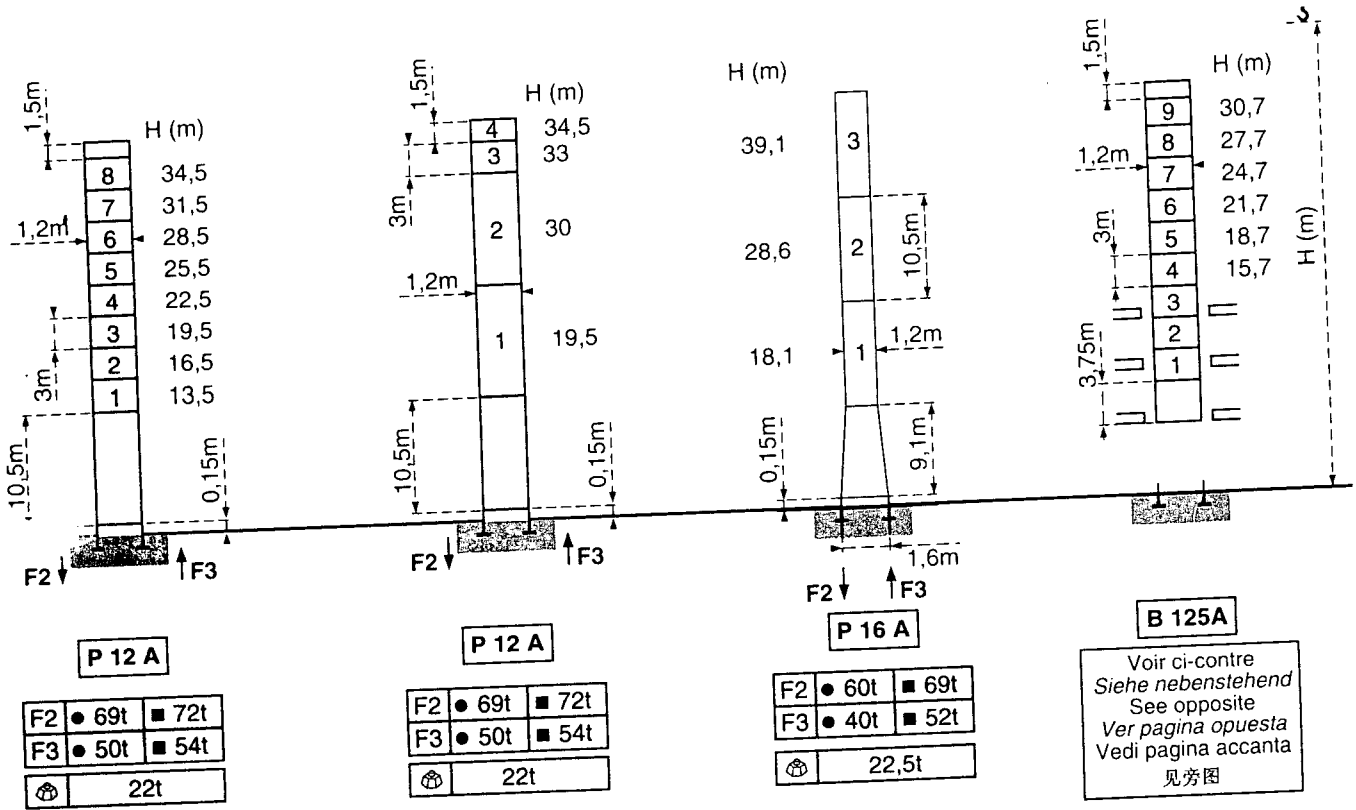
3

Mats - Maste - Masts Mástil
Torre - 塔身

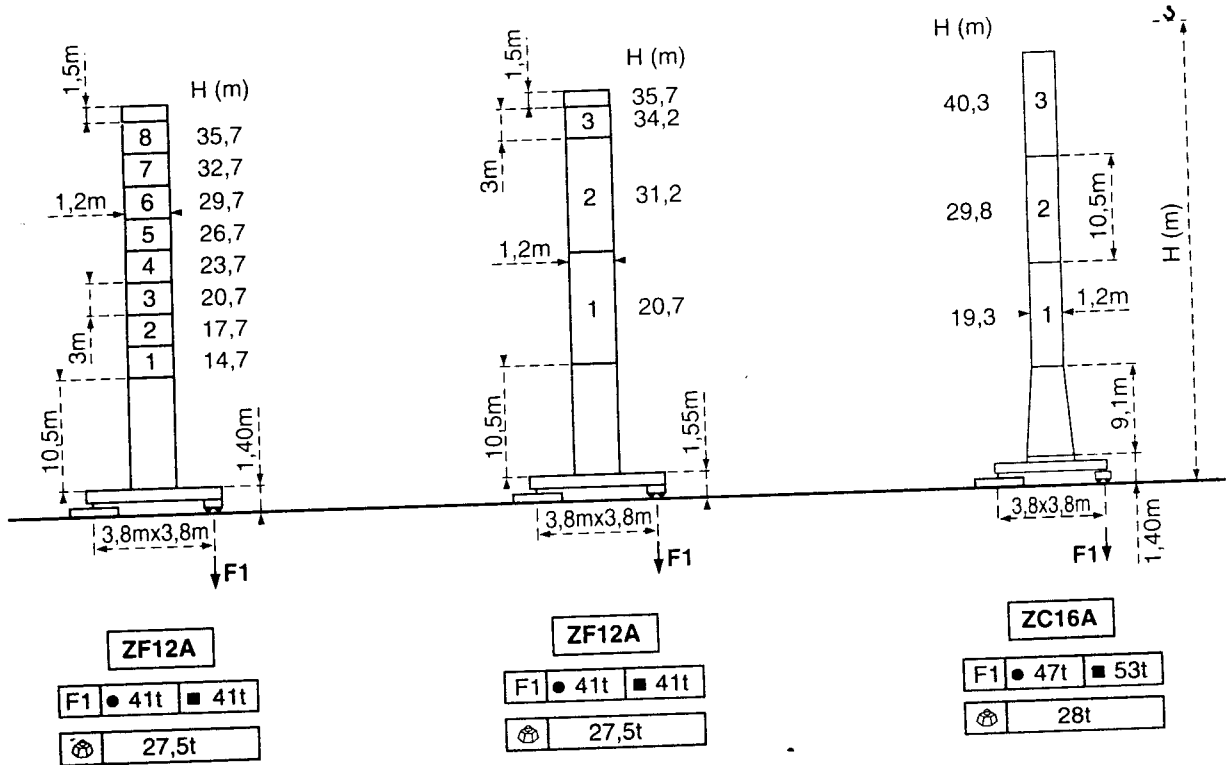


□ 1,2m

Flèche - Ausleger - Jib
Flecha - Braccio - 起重臂
30m → 48m

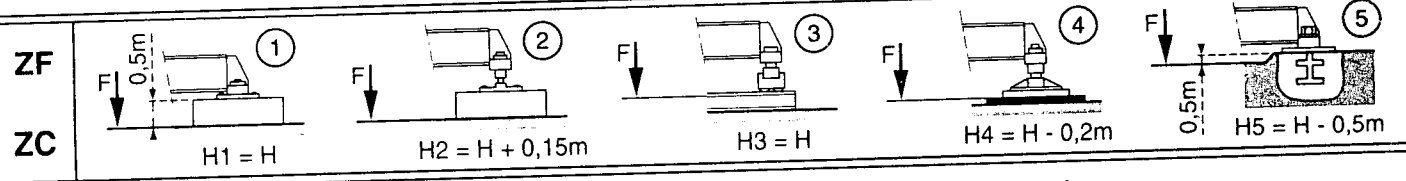
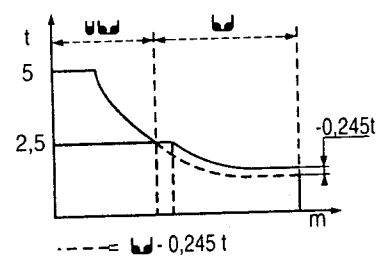
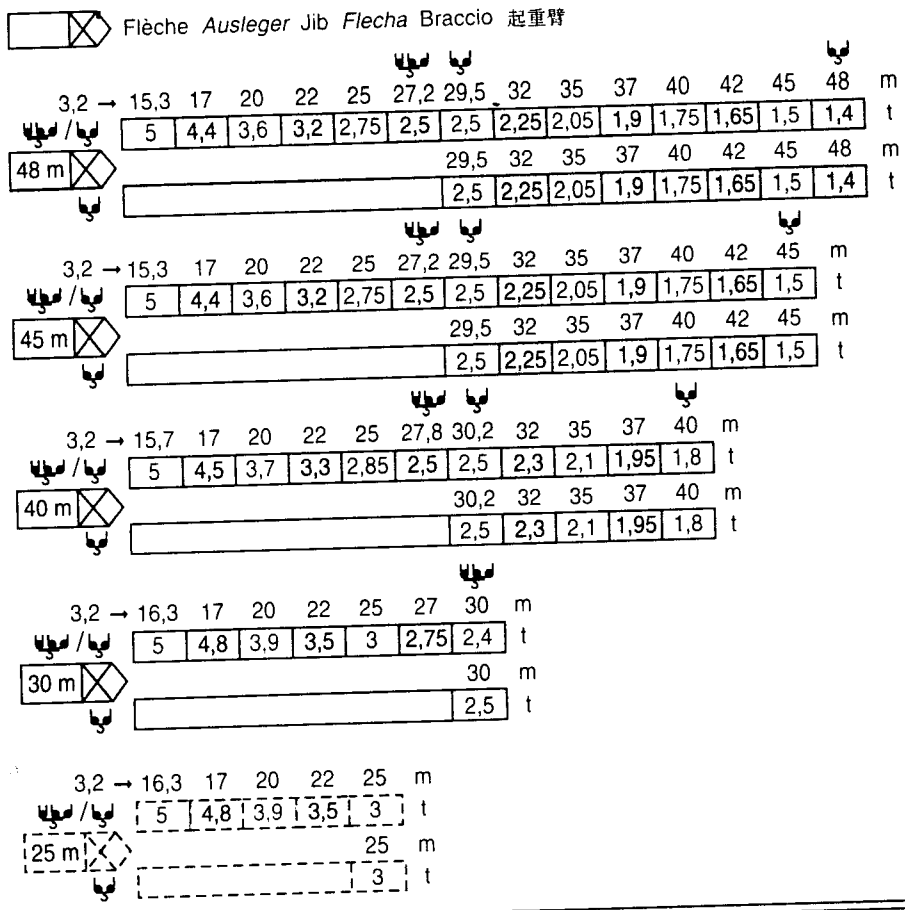


B 125A
Voir ci-contre
Siehe nebenstehend
See opposite
Ver pagina opuesta
Vedi pagina accanto
见旁图

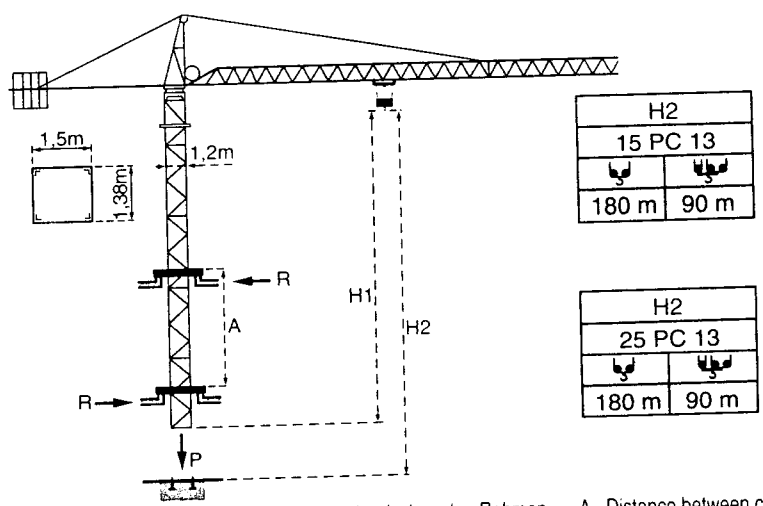


F = Réactions - Eckdrücke - Reactions - Reacciones - Reazioni - 反力

Courbes de charges - Lastkurven - Load diagrams - Curvas de cargas - Curve di carico - 负荷曲线

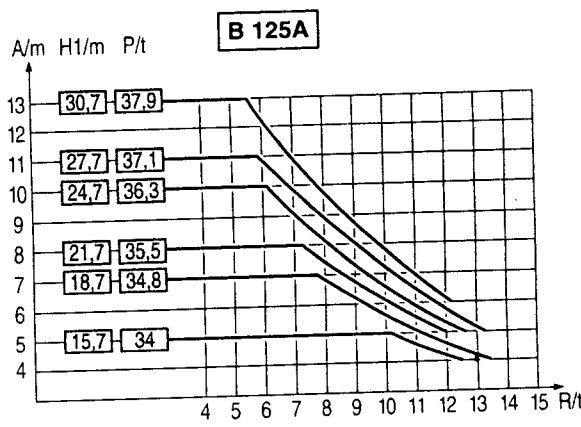


Télescopage sur dalles - Kletterkrane im Gebäude - Climbing crane
Telescopage gruas trepadoras - Gru in cavedio - 楼板上顶升



H2	
15 PC 13	
180 m	90 m

H2	
25 PC 13	
180 m	90 m



A Distance entre cadres / A Abstand zwischen den Rahmen / A Distance between collars / A Distancia entre marcos / A Distanza fra i telai
H1 Hauteur grue / H1 Kranhöhe / H1 Crane height / H1 Altura grúa / H1 Altezza gru
P Poids de la grue (en service) / P Krangewicht (in Betrieb) / P Crane weight (in service) / P Peso de la grúa (en servicio) / P Peso della gru (in servizio)
R Réaction horizontale / R Horizontalkräfte / R Horizontal reaction / R Reaccion horizontal / R Reazione orizzontale

- En service / ● In Betrieb / ● In service / ● En servicio / ● 工作状态
- Hors service / ■ Ausser Betrieb / ■ Out of service / ■ Fuera de servicio / ■ 非工作状态
- ⊕ A vide sans lest avec flèche et hauteur maximum. / ⊕ Ohne Last und Ballast mit Maximalausleger und Maximalhöhe. / ⊕ Without load and ballast with longest jib and maximum height. / ⊕ Sin carga, sin lastre con flecha y altura máxima. / ⊕ A vuoto senza zavorra e con braccio massimo e altezza massima. / ⊕ 空载, 无配重, 起重臂和高度均为最大值