

### 1.1. SPECIFICATIONS

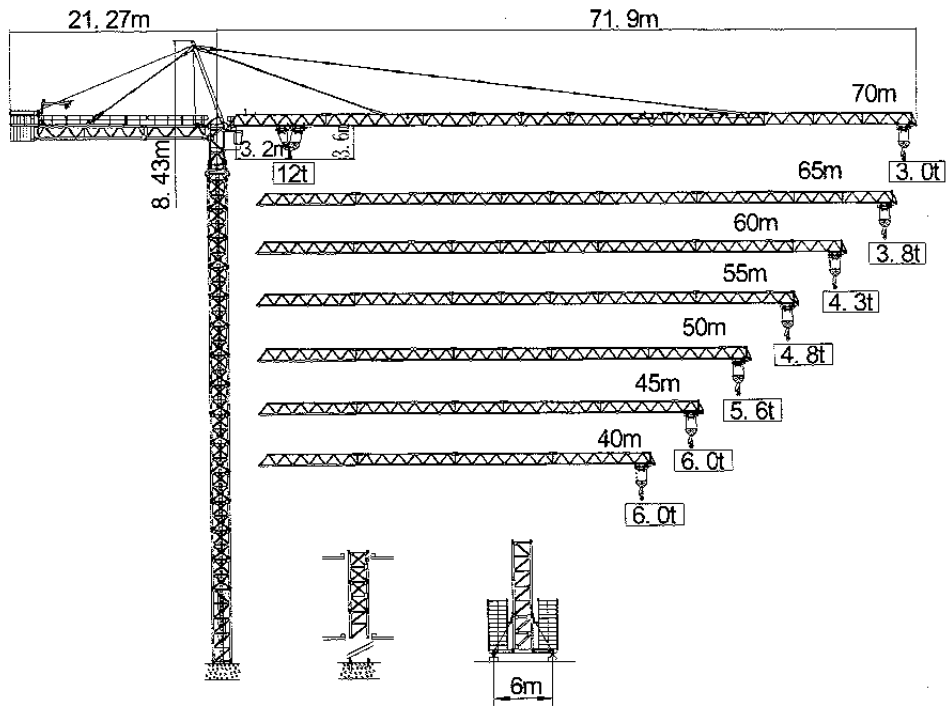


Fig.1-1-1

PA            VA  
 Fixing anchors    Undercarriage            Anchored

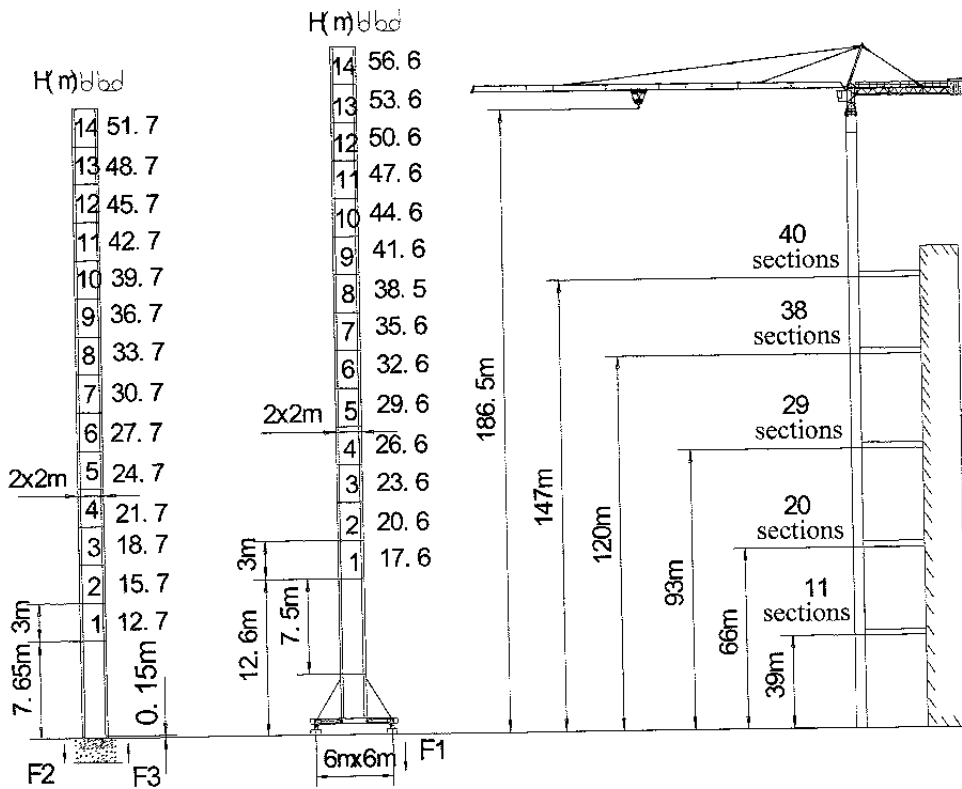


Fig.1-1-2

Table 1-1-2

F2	○144t	□124t
F3	○99t	□78t
⊗	82t	

F1	○91t	□95t
⊗	93t	

⚡	3x380V (± 5%)
	50-HZ
Needed electrical force	105 kVA

○ : In service

□ : Out of service

⊗ : Crane weight without load or ballast with long jib and at maximum height.

Table 1-1-1

R	Fall	R(max) m	C(max) t	25	30	35	40	45	50	55	60	65	70
70	IV	3.2-21.07	12.0	9.7	7.7	6.6	5.25	4.4	3.8	3.3	2.8	2.5	2.25
	II	4.1-40.30	6.0	6.0	6.0	6.0	6.0	5.2	4.6	4.1	3.6	3.3	3.0
65	IV	3.2-23.35	12.0	11.0	8.8	7.2	6.1	5.2	4.5	3.9	3.4	3.0	
	II	4.1-44.83	6.0	6.0	6.0	6.0	6.0	5.9	5.2	4.6	4.2	3.8	
60	IV	3.2-23.76	12.0	11.2	9.0	7.4	6.2	5.3	4.6	4.0	3.5		
	II	4.1-45.64	6.0	6.0	6.0	6.0	6.0	6.0	5.3	4.7	4.36		
55	IV	3.2-23.80	12.0	11.3	9.0	7.4	6.2	5.3	4.6	4.0			
	II	4.1-45.72	6.0	6.0	6.0	6.0	6.0	6.0	5.3	4.8			
50	IV	3.2-24.53	12.0	11.7	9.4	7.7	6.5	5.5	4.8				
	II	4.1-47.19	6.0	6.0	6.0	6.0	6.0	6.0	5.6				
45	IV	3.2-24.87	12.0	11.9	9.5	7.8	6.6	5.7					
	II	4.1-45.00	6.0	6.0	6.0	6.0	6.0	6.0					
40	IV	3.2-25.20	12.0	12.	9.7	8.0	6.8						
	II	4.1-40.00	6.0	6.0	6.0	6.0							

IV: Dual trolley

II: Single Trolley