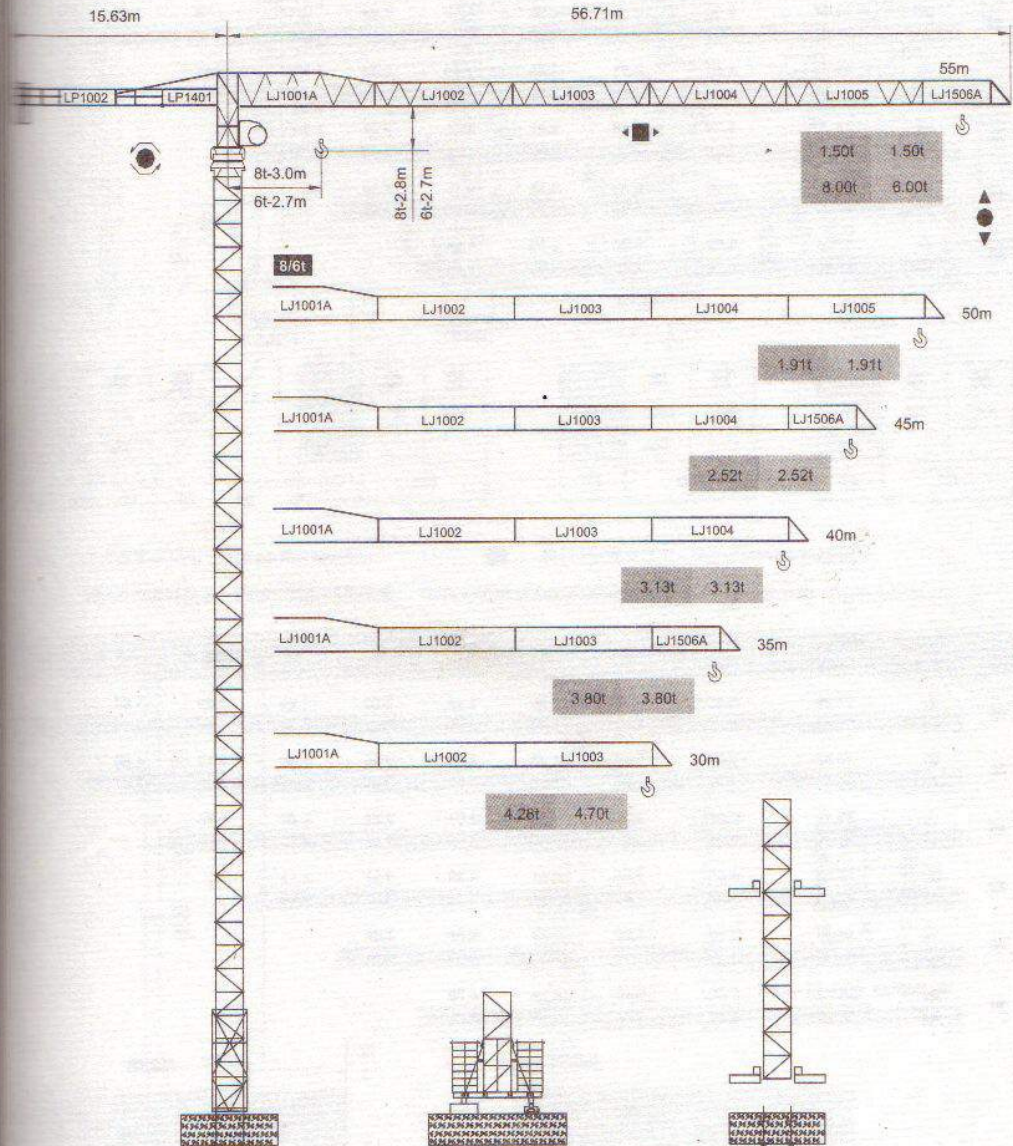
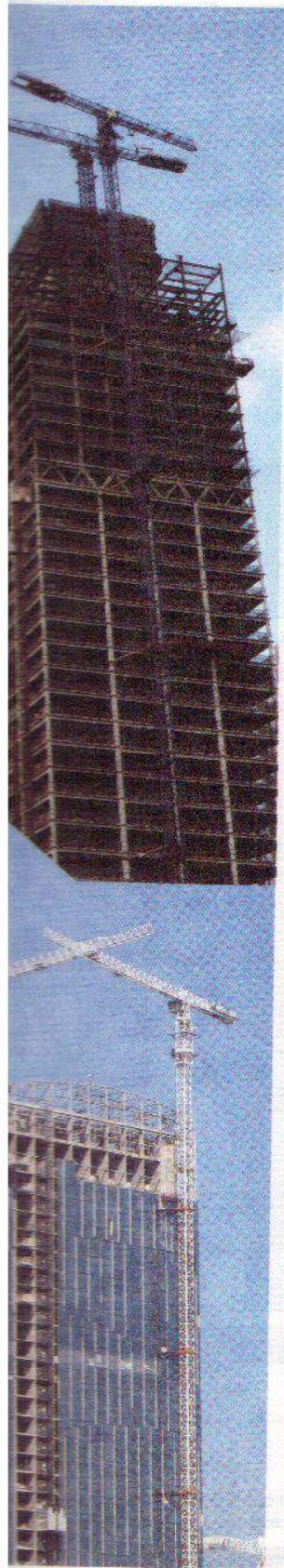


永茂建机
YONGMAO

ST5515B
8/6t



ISO9001:2008



CE FEM

Topless

V 4.0-31082012



YONGMAO HOLDINGS LIMITED

塔式起重机

061

Topless ST5515B

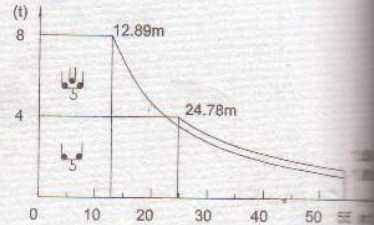
ST5515B

8/6t

載荷表 Load Chart

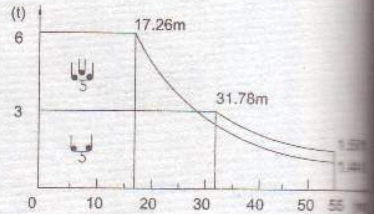
8t

R (m)	倍率 Fall	R(C _{max}) (m)	C _{max} (t)	20	25	30	35	40	45	50	55
55	山	12.89	8.00	4.70	3.54	2.78	2.24	1.84	1.53	1.28	1.08
	山	24.76	4.00	4.00	3.96	3.20	2.66	2.26	1.95	1.70	1.53
50	山	14.04	8.00	5.23	3.96	3.13	2.54	2.10	1.76	1.49	
	山	27.07	4.00	4.00	4.00	3.55	2.96	2.52	2.18	1.91	
45	山	15.73	8.00	6.01	4.58	3.64	2.98	2.48	2.10		
	山	30.41	4.00	4.00	4.00	4.00	3.40	2.90	2.52		
40	山	16.72	8.00	6.48	4.95	3.95	3.24	2.71			
	山	32.40	4.00	4.00	4.00	4.00	3.66	3.13			
35	山	17.27	8.00	6.73	5.15	4.11	3.38				
	山	33.48	4.00	4.00	4.00	4.00	3.60				
30	山	17.81	8.00	6.98	5.35	4.28					
	山	30.00	4.00	4.00	4.00						



6t

R (m)	倍率 Fall	R(C _{max}) (m)	C _{max} (t)	20	25	30	35	40	45	50	55
55	山	17.26	6.00	5.06	3.90	3.14	2.60	2.20	1.89	1.64	1.44
	山	31.78	3.00	3.00	3.00	3.00	2.67	2.27	1.95	1.70	1.50
50	山	18.83	6.00	5.60	4.33	3.49	2.90	2.46	2.12	1.85	
	山	34.68	3.00	3.00	3.00	3.00	2.97	2.53	2.18	1.91	
45	山	21.11	6.00	6.00	4.95	4.01	3.34	2.84	2.46		
	山	38.94	3.00	3.00	3.00	3.00	3.00	2.91	2.52		
40	山	22.83	6.00	6.00	5.41	4.39	3.67	3.13			
	山	40.00	3.00	3.00	3.00	3.00	3.00	3.00			
35	山	23.52	6.00	6.00	5.60	4.54	3.80				
	山	35.00	3.00	3.00	3.00	3.00	3.00				
30	山	24.20	6.00	6.00	5.79	4.70					
	山	30.00	3.00	3.00	3.00	3.00					



Topless ST5515B

062

Topless ST5515B



YONGMAO HOLDINGS LIMITED

ST5515B

8/6t

永茂
YONGMAO

主要性能參數 Specifications

機構 Mechanism							電動機 Motor kW	
		m/min	t	m/min	t			
	8t	30LFV20	0-40	4.0	0-20	8.0	500m >500m*	30
			0-48	2.0	0-24	4.0		
			0-80	0.75	0-40	1.5		
	6t	30SWR20★	0-40	4.0	0-20	8.0	360m	30/30
			0-80	2.0	0-40	4.0		
			24PQC20	0-6.5	4.0	0-3.2		
0-30	4.0	0-15	8.0					
0-60	2.0	0-30	4.0					
6t	24YQL15★	0-8.0	3.0	0-4.0	6.0	390m	24/24/5.4	
		0-40	3.0	0-20	6.0			
		0-80	1.5	0-40	3.0			
6t	24PQC15	0-8.5	3.0	0-4.2	6.0	400m >400m*	24/24/6	
		0-40	3.0	0-20	6.0			
		0-80	1.5	0-40	3.0			
	8t	DTC95	0-57m/min				95N.m	
	6t	DTC55	0-57m/min				55N.m	
	RTC190★		0-0.7rpm				2x95N.m	
	YMD50		0-0.7rpm				2x5.5	
	RT		12.5-25m/min				2x2.6/5.2	

發機容量 Power supply		kVA	
380V (±10%)	50 Hz	30LFV20 30SWR20 24PQC20: 50	24YQL15 24PQC15: 45

* 與製造商聯繫 Contact us, please
★ 标准配置 Standard configuration

本技术参数不受法律约束，技术信息请详见相应说明书。
Specifications and data are not legally binding. For any technical information, please refer to corresponding instructions.

064

Topless ST5515B



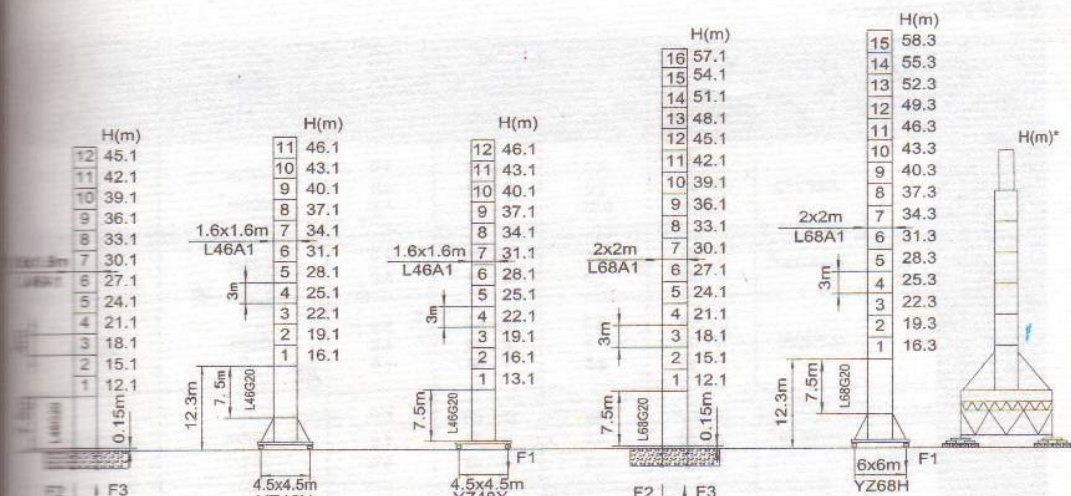
YONGMAO HOLDINGS LIMITED



11/2008

ST5515B

8/6t



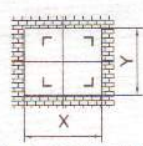
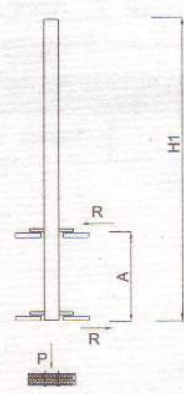
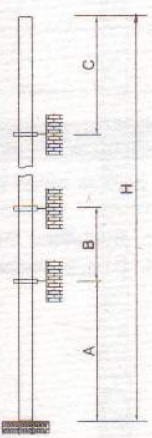
	●	■
F2	94t	125t
F3	59t	97t
⊗	45t	

	●	■
F1	72t	91t
⊗	55t	

	●	■
F2	120t	200t
F3	80t	165t
⊗	62t	

	●	■
F1	88t	120t
⊗	72t	

● 工作狀態支反力 In service reaction ■ 非工作狀態支反力 Out of service reaction
 ⊗ 整機自由高度重量 (不含平衡重及壓重重量) Total weight of free standing crane (excludes counter weight & ballast.)



* 內爬開口尺寸請與我們聯繫
 Value of x&y, contact us.

塔身節 Mast	A (m)	B (m)	C (m)	H (m)
L46A1	33.0	24.0	33.1	235 >236*
L68A1	45.0	36.0	45.1	270 >270*

塔身節 Mast	H1 (m)	A (m)	P (t)	R (t)
L46A1	27.1	7-11	50	22
L68A1	54.1	16	80	22

綁帶道數 Number of tie collars = (H-A-C)/B+1

Topless ST5515B



YONGMAO HOLDINGS LIMITED